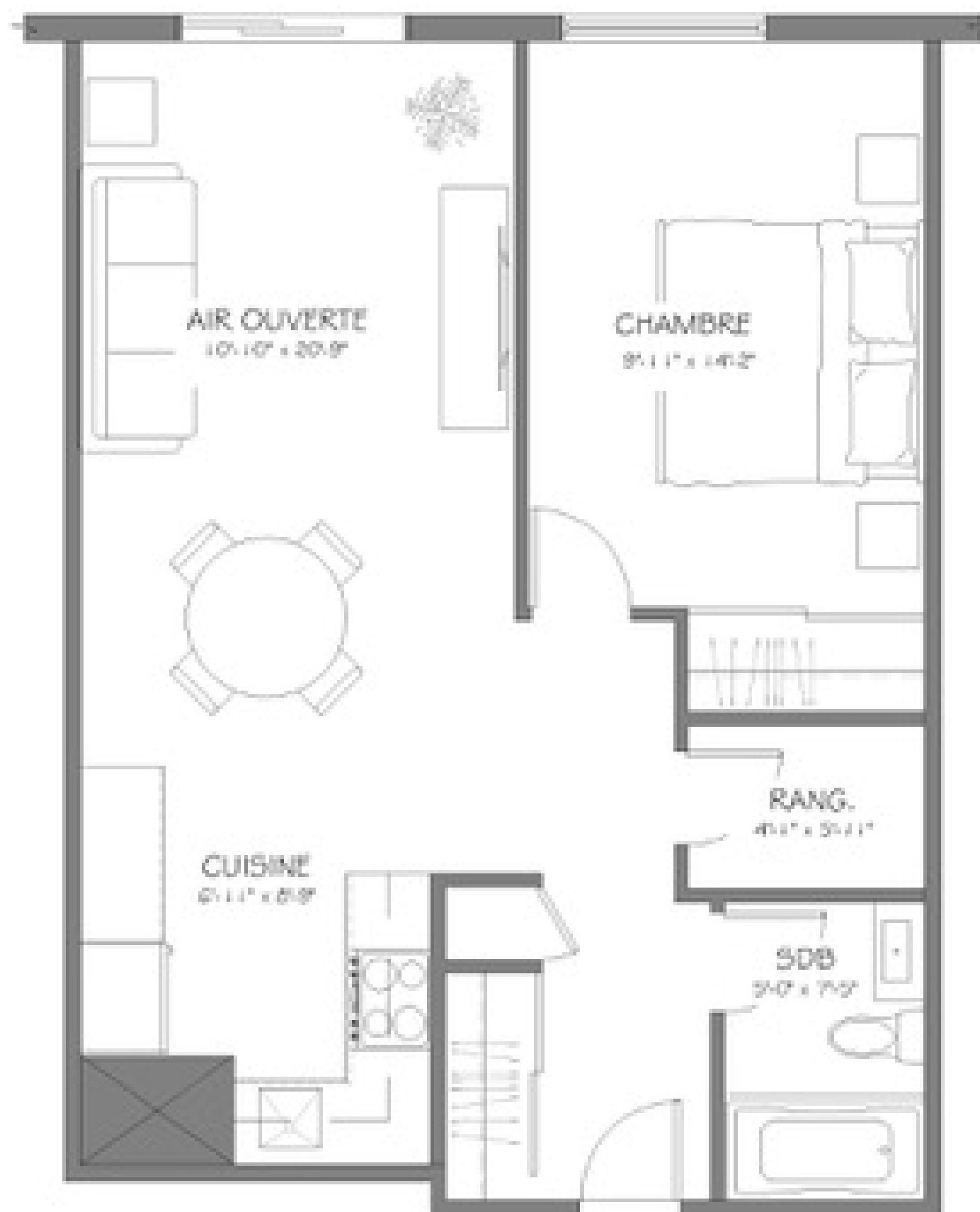


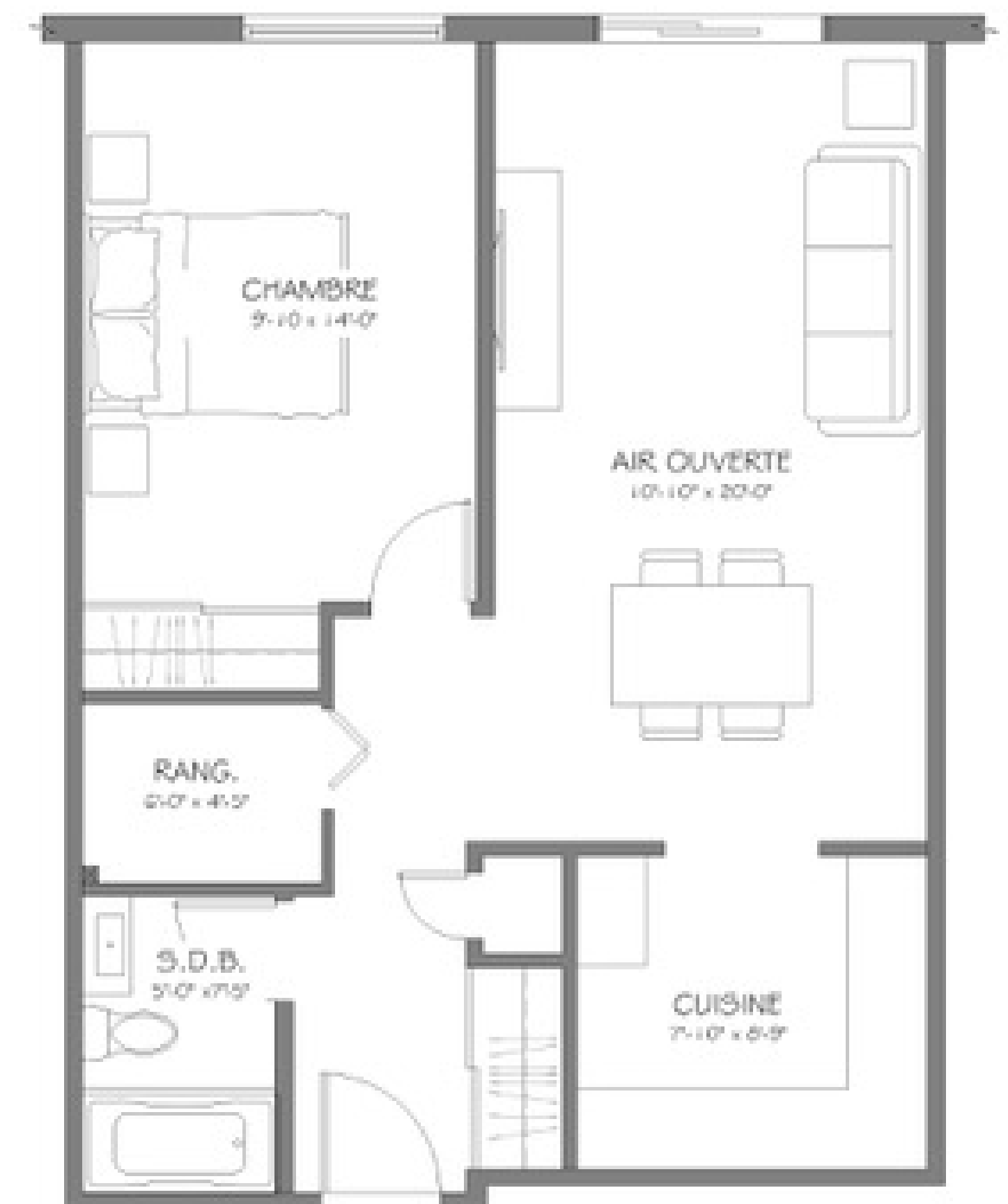
# Viventi

MILIEU DE VIE MATURE & VIBRANT. *Laval*

LOGEMENT 3 1/2  
TYPE D  
SUPERFICIE 575 P.I.C.A.



LOGEMENT 3 1/2  
TYPE F  
SUPERFICIE 580 P.I.C.A.



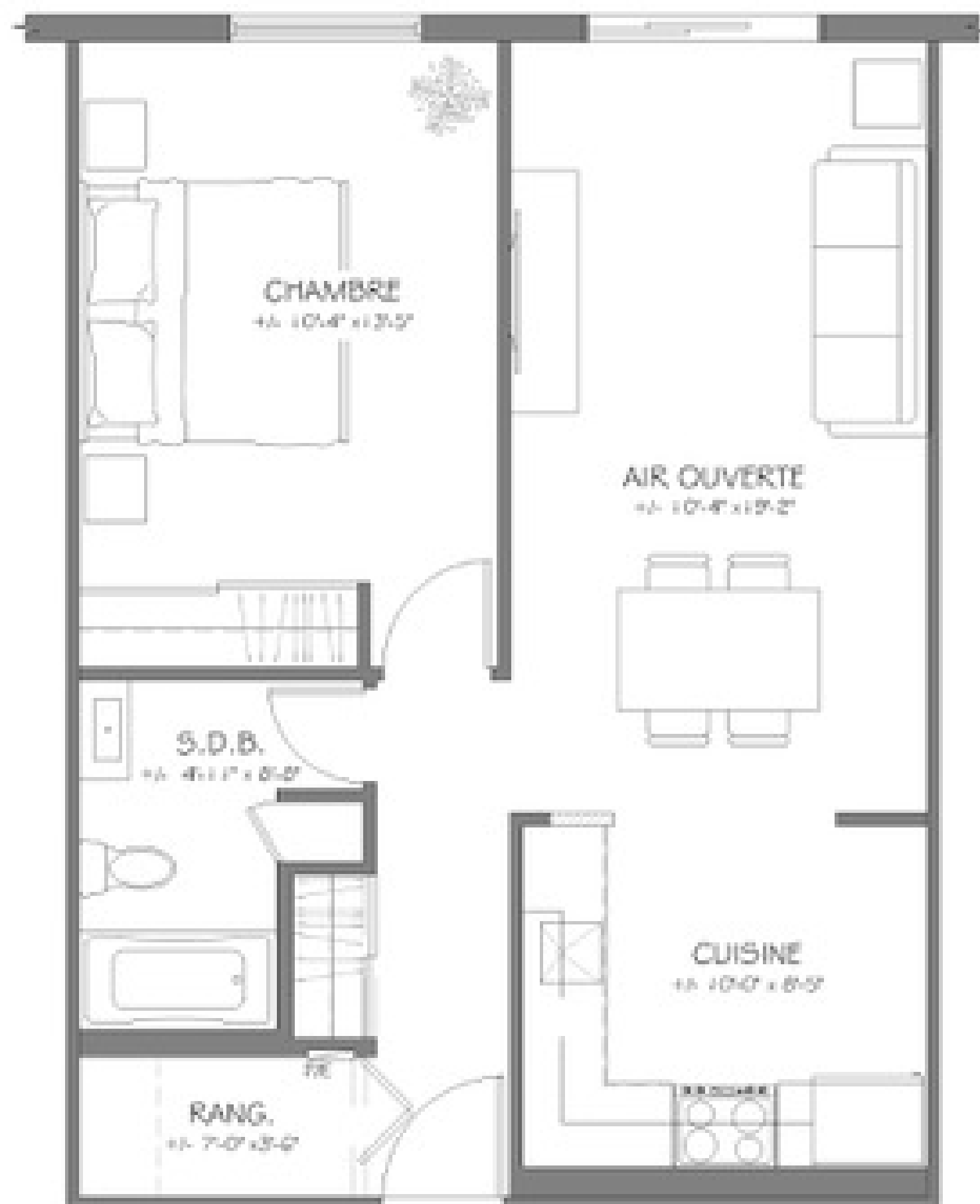
Prix sujets à changement sans préavis  
Prices are subject to changes at any time

Bureau des ventes  
1110 boul. Vanier, Laval Est  
514-665-7003

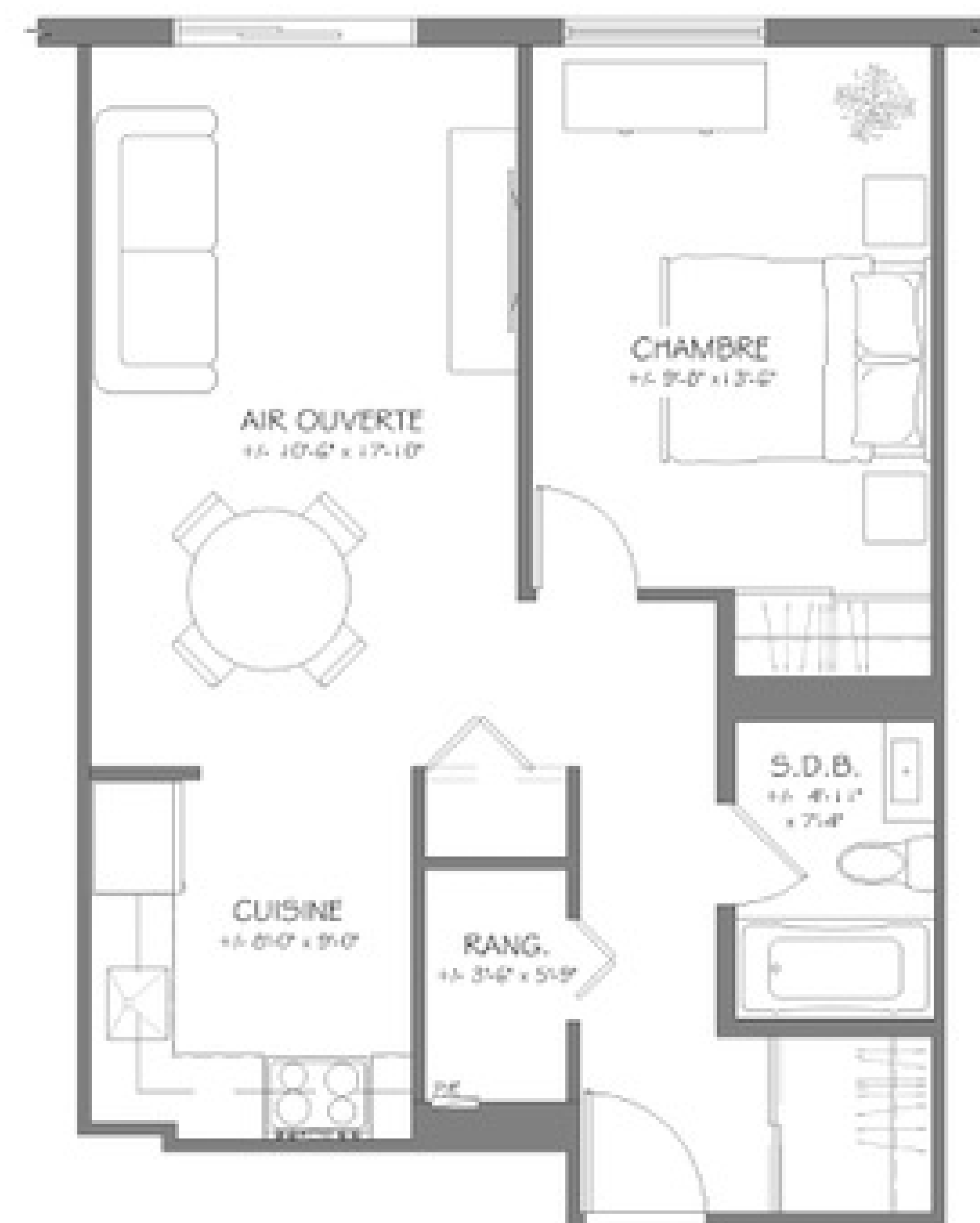
# Viventi

MILIEU DE VIE MATURE & VIBRANT. *Laval*

LOGEMENT 3 1/2  
TYPE G  
SUPERFICIE 575 P.L.C.A.



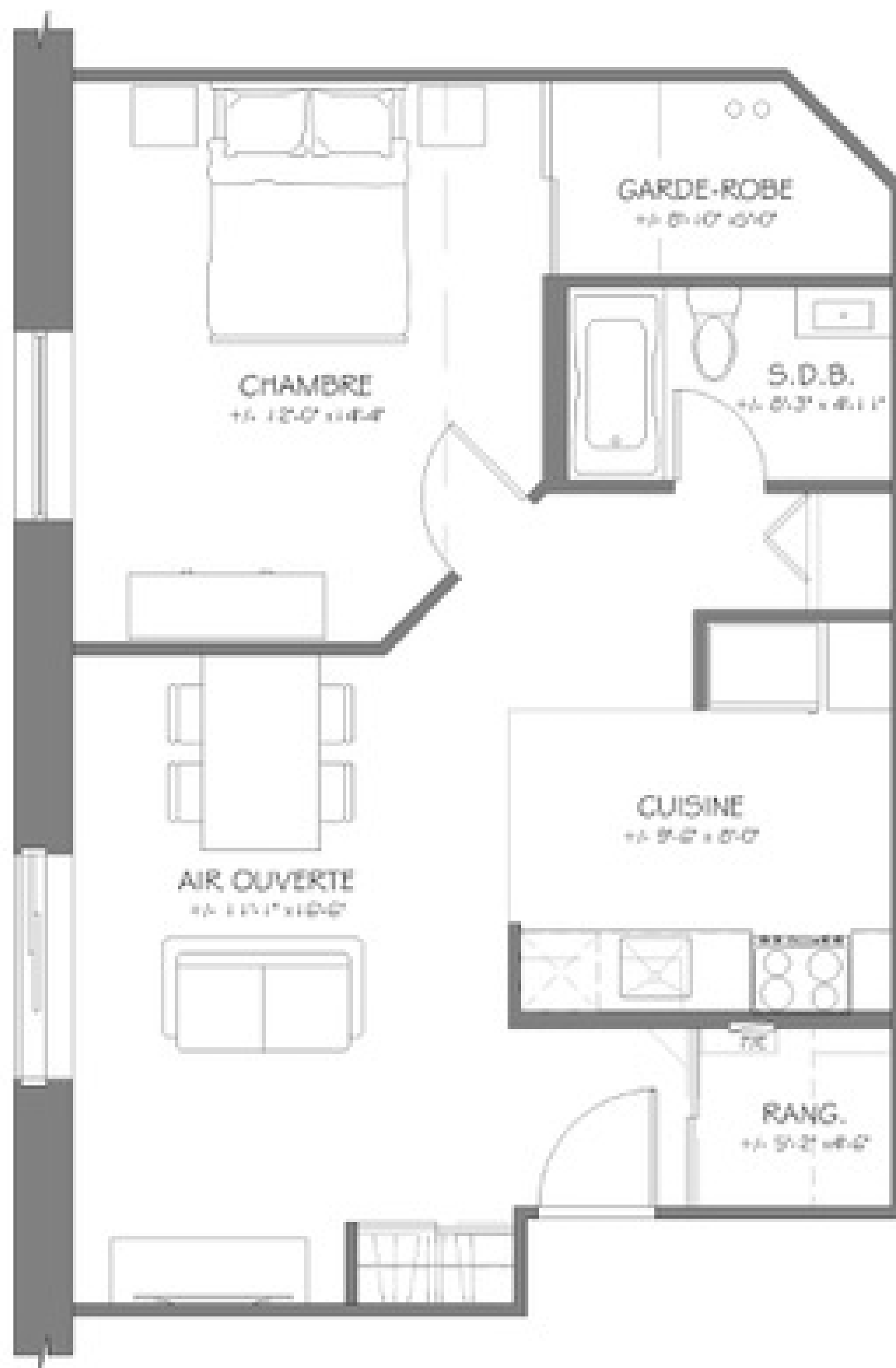
LOGEMENT 3 1/2  
TYPE I  
SUPERFICIE 550 P.L.C.A.



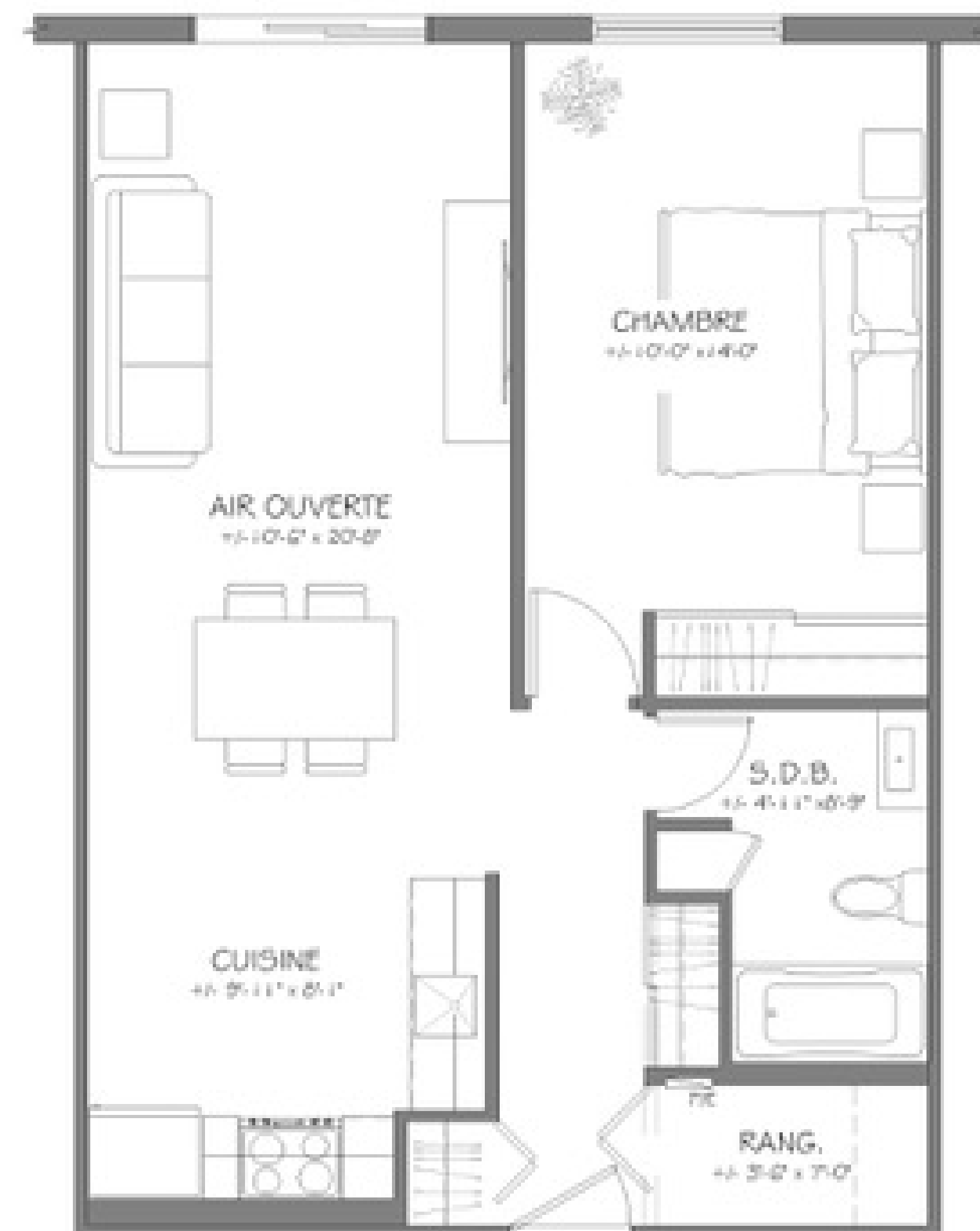
# Viventi

MILIEU DE VIE MATURE & VIBRANT. *Laval*

LOGEMENT 3 1/2  
TYPE L  
SUPERFICIE 605 P.I.C.A.



LOGEMENT 3 1/2  
TYPE N  
SUPERFICIE 590 P.I.C.A.



# Viventi

MILIEU DE VIE MATURE & VIBRANT. *Laval*

LOGEMENT 3 1/2  
TYPE 0  
SUPERFICIE 570 PI.CA.

